

MONTHLY MEMBERSHIP PROGRESS REPORT

LOCATION PAKISTAN

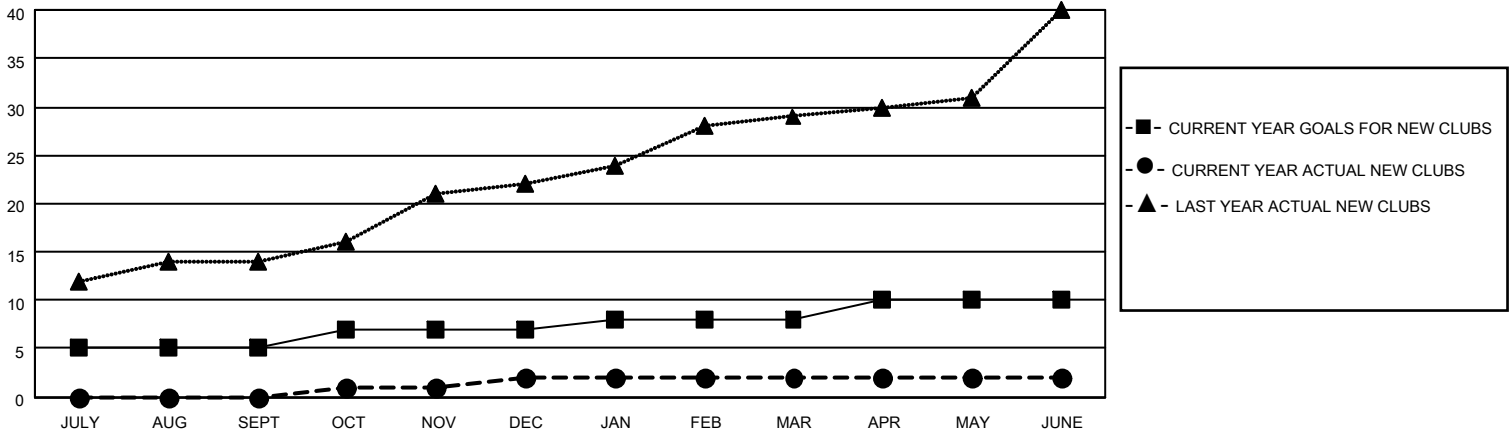
District 305 N1

Results as of: 6/30/2023

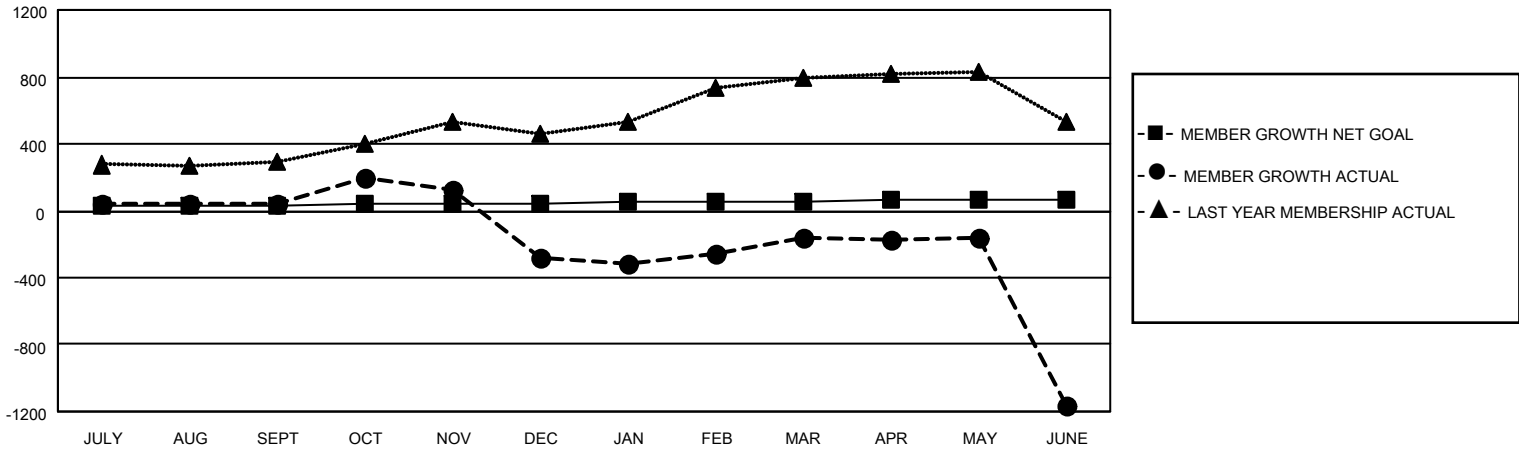
Clubs			
RESULTS FOR 2022-2023			
QUARTER	NEW CLUB GOAL	NEW CLUBS	DROPPED CLUBS
JULY/AUG/SEPT	5	0	2
OCT/NOV/DEC	2	2	11
JAN/FEB/MAR	1	0	2
APR/MAY/JUNE	2	0	21

Members			
RESULTS FOR 2022-2023			
QUARTER	MEMBER GROWTH NET GOAL	MEMBER GROWTH ACTUAL	DROPPED MEMBERS ACTUAL (including transfers)
JULY/AUG/SEPT	25	153	112
OCT/NOV/DEC	20	260	569
JAN/FEB/MAR	10	246	75
APR/MAY/JUNE	15	155	1,130

GOALS AND ACTUAL NEW CLUBS CUMULATIVE



GOALS AND ACTUAL MEMBERS CUMULATIVE



DROPPED CLUBS: 36

72 CLUBS OF 149 ADDED 1 OR MORE NEW MEMBERS

GENDER DISTRIBUTION

MALE	1,864 (78.62%)
FEMALE	507 (21.38%)
NON BINARY	0 (0.00%)
PREFER NOT TO ANSWER	0 (0.00%)

DROPPED MEMBERS

[CLICK HERE FOR CUMULATIVE MEMBERSHIP DATA](#)

DECEASED	3
CLUB CANCELLED	636
OTHER	1,247
TOTAL	1,886

TOTAL FAMILY UNIT MEMBERS 1,637

FAMILY MEMBERS PAYING HALF DUES 1,210